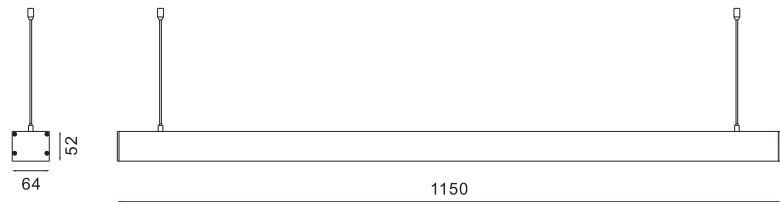


LED LINEAR LIGHT SERIES



FS8028-26

Max.26W

Operating Temp. : -30°C + 40°C

23W SMD chip (4×33pcs) DC 600mA

■ 2700K/1950lm CRI90

■ 3000K/2210lm CRI90

■ 4000K/2470lm CRI80

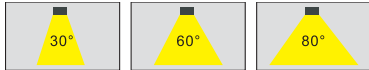
■ 5000K/2700lm CRI70

Remote Driver: AC100-240V 50/60Hz

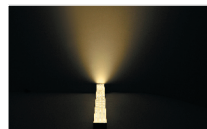
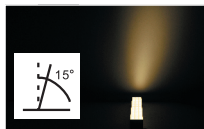
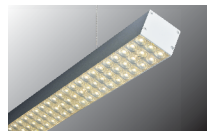
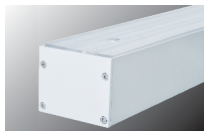
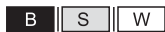
Driver performance: Non-dimmable/dimmable

Dimmer: DALI/0~10v/Triac

Beam angle



Color selection



Asymmetric optics 15°

Symmetric optics