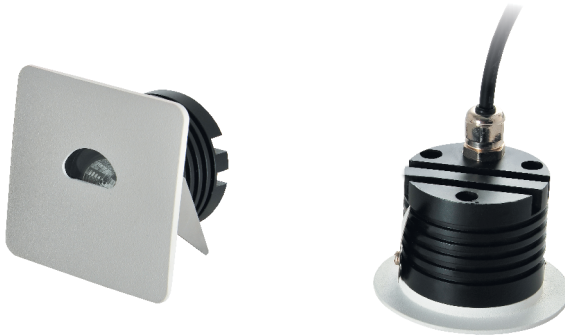




## LED CORNER LIGHT SERIES



SQ55



38



Ø47mm



Ø55



38



Ø47mm

### FS5094-02 / FS5095-02

Max.3W

Operating Temp. : -30°C + 40°C

2.7W COB chip (DC500mA)

■ 2700K/213lm CRI80

■ 3000K/234lm CRI80

■ 4000K/258lm CRI80

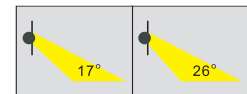
■ 5000K/291lm CRI70

Remote Driver: AC100-240V 50/60Hz

Driver performance: Non-dimmable/dimmable

Dimmer: 0-10V/Triac

Beam angle



Color selection

