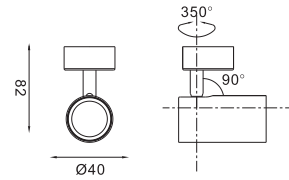


LED SURFACE LAMP SERIES



FS1069-06

Max.6W

Operating Temp. : -30°C + 40°C

5W COB chip (DC500mA)

■ 2700K/350lm CRI90

■ 3000K/430lm CRI90

■ 4000K/500lm CRI80

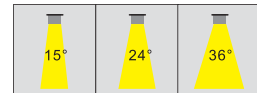
■ 5000K/510lm CRI70

Remote Driver: AC100-240V 50/60Hz

Driver performance: Non-dimmable/dimmable

Dimmer: Triac

Beam angle



Color selection

