

# RED GREEN BLUE WHITE 4 Color Mixing LED Landscape Light



### LED Wave Length

R =620-630 nm  
G =520-530 nm  
B =460-470 nm  
W =6000K

### Optics



**A24**  
L0115D038LK 15°



L0130D038LK 30°

About lens for suitable for **RGBW Module** type LED only

### Housing Color Option

#### Basic



Sanded Dark Grey  
KAP 7037

#### Secondary

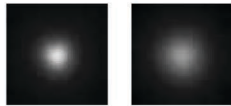


Silver Resistant Paint  
RAL 9006



Sanded Black  
RAL9005

### A24

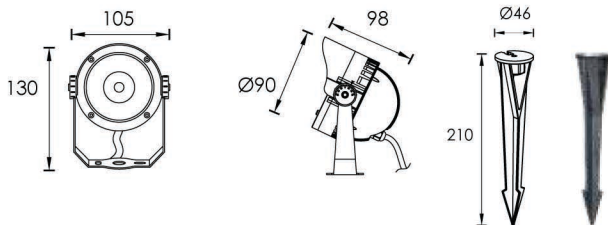


15°

30°

### Outer Dimensions

Unit:mm

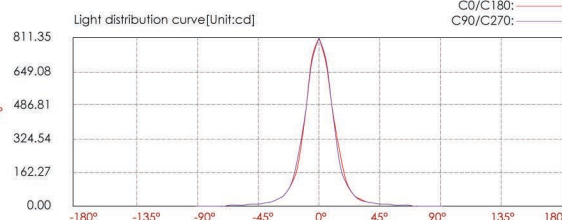
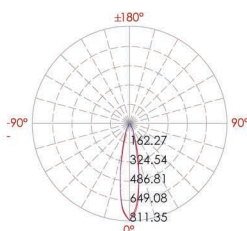


Plastic spike 5d

### Material Specifications

Housing	12" Die-casting dark grey powder coated aluminum T=60-80µm,Adhesion of ISO class 1/ASTM class 4B
Light Window	Tempered glass,T=4mm
LED	Prolight RGBW 4 IN1 LED
Cable gland	IP68 PG-9 PA66
Lens	All-in-one optical lens,efficiency≥85%
Bracket	Powder coated aluminum,T=2.5mm
Gasket	Tooling shaped seal
Power Cable	H05RN-F 5X0.5mm <sup>2</sup> L=2.0m

Item	Light source	Lens	The manufacturer selected lens degree(°)θ1/2	Input voltage(V)	Typical operating current(mA)	Typical consumption(W)	Typical luminance(lm)	IK rate
<b>A3BG0122</b>	1×6W RGBW 4in1	A24	30°	24V DC	338	8.1	248	07



Lux distance cure

Center beam LUX	Beam width V	H
202.79 LUX	0.8m	0.8m
50.70 LUX	1.6m	1.6m
22.53 LUX	2.3m	2.3m
12.67 LUX	3.1m	3.1m
8.11 LUX	3.9m	3.9m
5.63 LUX	4.7m	4.7m

Ver.Spread:22.0 Horiz.Spread:22.0