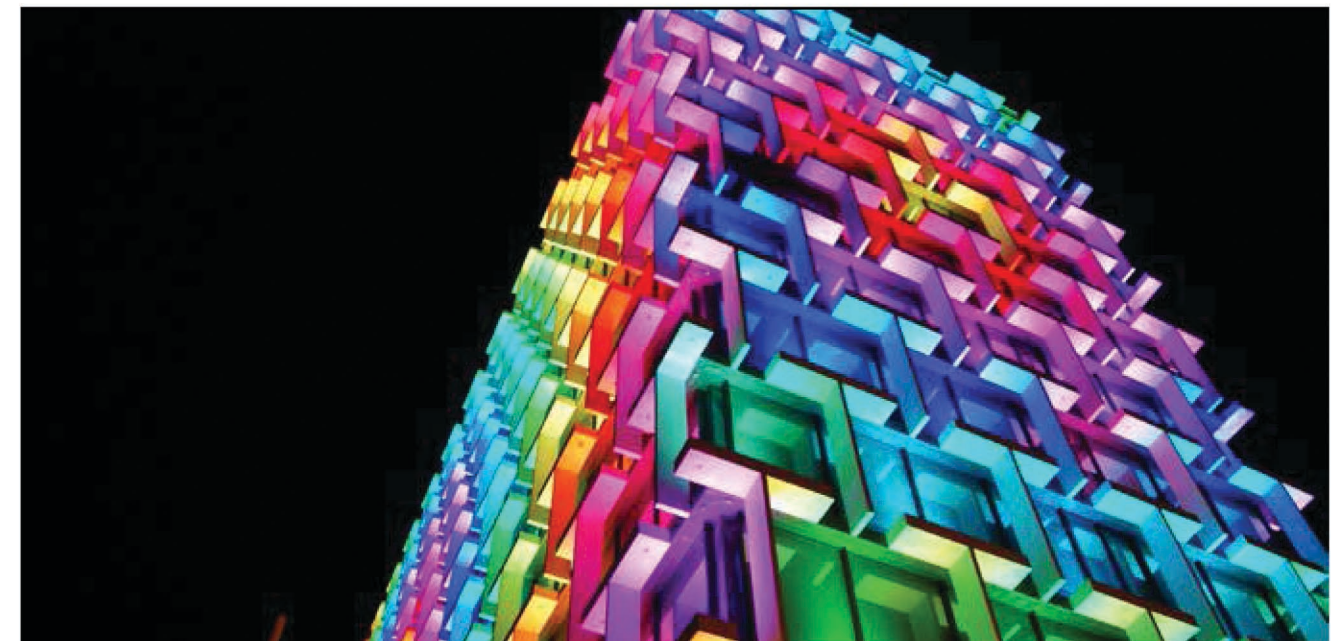


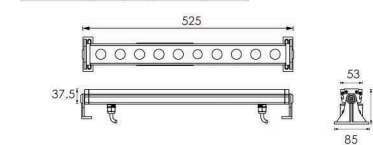
### High Power RGB LED Linear Wall Washer



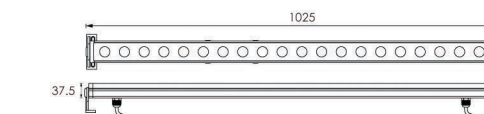
#### Outer Dimensions

Unit:mm

Low voltage input (24VDC)



B6QB1018

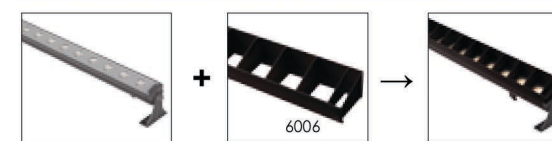


B6QB2018

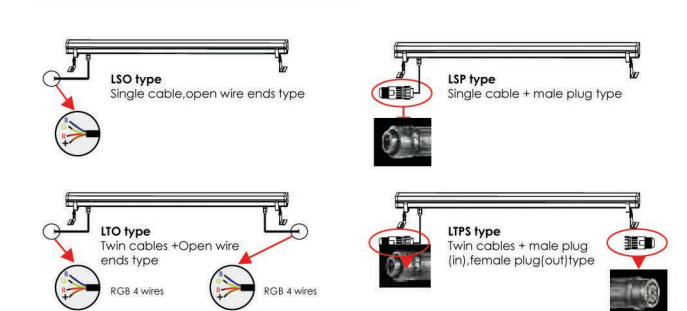
#### Material Specifications

Housing	Extruded aluminum, powder coated
Lens	Optical lens, efficiency 85%
Light Window	Tempered glass, T=3mm
Cable gland	IP68 PG-11 PA66
Gasket	Glass and housing are silicone sealed
LED	SMD3535 RGB 3IN1 LED
Operating temperature	-20°C~40°C
Bracket	12# Die-casting powder coated aluminum
Power Cable	H07RN-F 4X1.0mm <sup>2</sup> L=0.5m

#### Optional Accessories - Bevel cut anti-glare reflector



#### Low voltage input (24VDC) power cord model



Item	Light source	Lens	The manufacturer selected lens degree(°)B1/2	Length L=(mm)	Input voltage(V)	Typical operating current(mA)	Typical consumption(W)	Typical luminance(lm)	IK rate
B6QB1018	10x2W RGB 3in1 Full color	B49	30°	525	24V DC	R = 400 G = 500 B = 500	33.6	689	05
B6QB2018	20x2W RGB 3in1 Full color	B49	30°	1025	24V DC	R = 800 G = 1000 B = 1000	67.2	1386	05

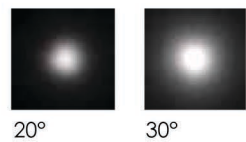
#### LED Wave Length

R =620-630 nm  
G =520-530 nm  
B =460-470 nm

#### Optics

B49	
L0120D023KP	20°
L0130D023KP	30°

#### B49



#### Adjustable Beam Direction



Air Valve



Cap-Optional Accessory



