

Recessed LED Stair Light & Wall Light



LED COLOUR TEMPERATURE

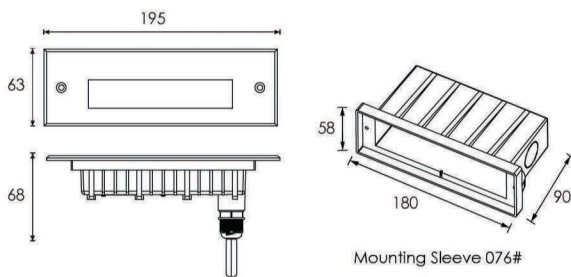
2000K · 3000K · 6000K

OPTICS

N/A

OUTER DIMENSIONS & ACCESSORIES

Unit:mm



MATERIAL SPECIFICATIONS

HOUSING	12# Die-casting grey powder coated aluminum T=60-80um Adhesion of ISO class 1/ASTM class 4B
FRONT COVER	12# Die-casting aluminum
LIGHT WINDOW	PC T=4mm
CABLE GLAND	IP68 PG-9 PA66
GASKET	Molding shaped silicone seal
LED DRIVER	Constant Voltage Input, Constant Current Output
OPERATING TEMPERATURE	-20°C~40°C
POWER CABLE	H05RN-F 2X1.0mm ² L=0.5m (low voltage) H05RN-F 3X1.0mm ² L=0.5m (high voltage)
MOUNTING SLEEVE	ABS 076#
DIMMABLE SUPPORT	Triac PWM 1-10V Dali

FRONT COVER COLOR

Basic



Sanded Dark Grey
KAP 7037

Secondary

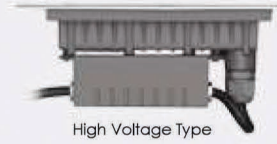


Silver Resistant Paint
RAL 9006



Sanded Black
RAL9005

MOUNTING SLEEVE CHARACTERISTIC

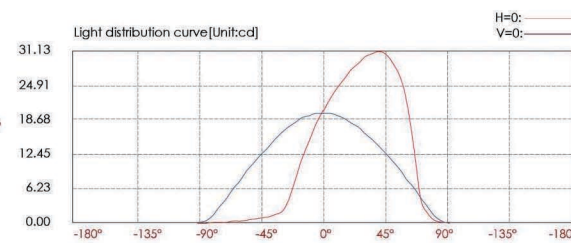
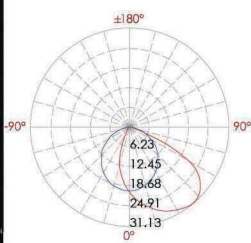
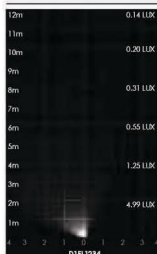


- The above picture – the supporting plate "A" is used for preventing deformation of the sleeve during the construction installation process.
- Please remove the supporting plate "A" from the mounting sleeve before the lamp installation.

TECHNICAL DATA

ITEM	LIGHT SOURCE	LENS	LENS DEGREE(°)Ø1/2	INPUT VOLTAGE(V)	OPERATING CURRENT(MA)	CONSUMPTION(W)	LUMINANCE(LM)	IK
D1FL1234	12X0.2	N/A	120°	24V DC 120/240	24V = 52 120V = 29 240V = 20	24V = 1.24 120V = 1.7 240V = 2	Cool White = 58 Warm White = 55.5	10

PHOTOMETRIC CURVES



Center beam LUX	Beam width V	Beam width H
4.99 LUX	3.00m	4.70m
1.25 LUX	5.90m	9.50m
0.55 LUX	8.90m	14.2m
0.31 LUX	11.8m	19.0m
0.20 LUX	14.8m	23.7m
0.14 LUX	17.7m	28.3m

Ver. Spread: 72.9
Horiz. Spread: 99.8