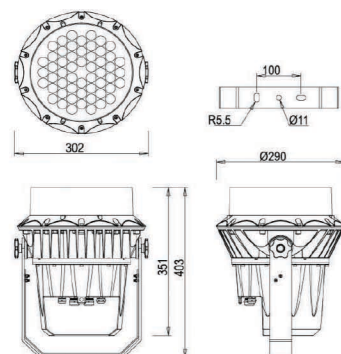




JRF3-54D



Product Dimension

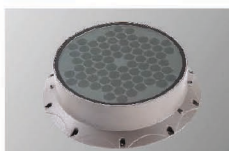
- Original design, creat top LED projector light. Fashion, modern outside design, make lamp become an art. Perfect combined with the environment.
- Lamp's main material is adopt high strength die-casting aluminum, cover adopt high toughen glass.shock and resistance rub resistance, Single double bracket use cooperatively.Alternative multiple accessories. Glare cover.
- Powerful function, strong control ability. 12 kinds of dynamic systems inside. Have original logarithmic dimming technology and mixture optical technology.The light varies soft and beautiful.



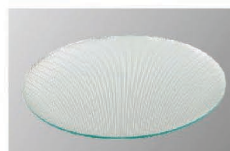
Circle light



Rectangular light



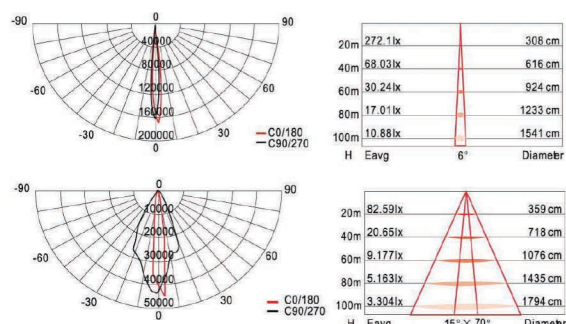
Light guide barrel



Rectangle glass (optional)

Product Specification

Product Code	JRF3-54D	JRF3-54D/54×2.2W
LED Quantity	54pcs	54pcs
Rated Power	85/128W	129W
Color	54 Single /14R14G14B12W	54Single
Luminous Flux	5753/3287 lm	6528 lm
Installation Pipe Diameter	Φ11×100mm	Φ11×100mm
Input Voltage	AC100-277V	AC100-277V
Frequency Range	50/60Hz	50/60Hz
Control Mode	CC/DMX512	CC/DMX512
Beam Angle	6°15X70°	6°15X70°
Temperature of Working Condition	-35-50°C	-35-50°C
Humidity of Working Condition	10-90%	10-90%
LED Lifetime	70000h	70000h
Protection Grade	IP66	IP66
Net Weight	9.8kg	9.6kg
Gross Weight	10.5kg	10.5kg
Packing Size	365x380x495mm	365x380x495mm



Packing size is outer size of box
All parameters are measured at 25°C ambient temperature, 35% humidity experimental enviroment
Luminous flux is the maximum value among all kinds of light distribution.