



# Asymmetrical Power LED Inground Light

## LED Colour Temperature

2000K  
3000K  
6000K

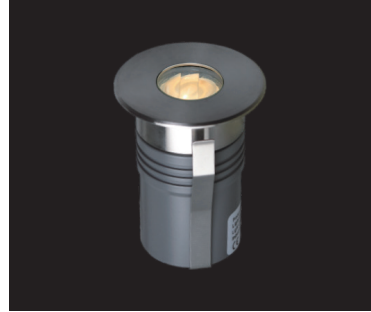
## Optics

**C9**  
L01-45° F023YH  
35°

## C9

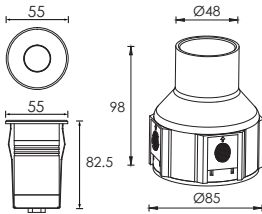


45°  
35°



## Outer Dimensions

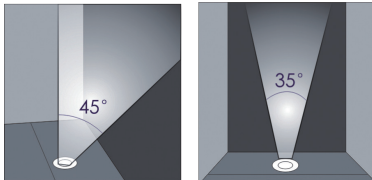
Unit:mm



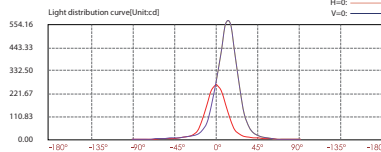
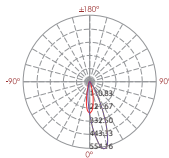
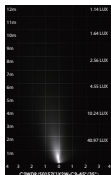
Mounting sleeve 011 #

## Material Specifications

Housing	12# Die-casting grey powder coated aluminum, T=60-80µm Adhesion of ISO class 1/ASTM class 4B
Front cover	Hard chromeplated stainless steel SUS 316#
Light Window	Tempered frosted step glass.T=7mm
LED	OSRAM
Glass pressure capacity	Full area=1704kgs
Gasket	Molding shaped silicone seal
Lens	Optical lens.efficiency≥85%
Operating temperature	-20°C-40°C
Power Cable	H05RN-F 2X1.0mm <sup>2</sup> L=0.5m (low voltage) H05RN-F 3X1.0mm <sup>2</sup> L=0.5m (high voltage)
Mounting sleeve	ABS 011 #
Dimmable Support	<b>Triac PWM 1-10V Dali</b>



Item	Light source	Lens	The manufacturer selected lens degree(°)θ1/2	Input voltage(V)	Typical operating current(mA)	Typical consumption(W)	Typical luminance(lm)	IK rate
○C2WDR0157 A	1×2W	C9	45° 35°	24V DC 120/240	2.4 V = 105 120V = 47 240V = 28	2.4 V = 2.5 120V = 3.0 240V = 3.1	Cool white = 158 Warm white = 130	08



Lux distance curve

Beam width	V	H
2m	0.6m	0.7m
4m	1.2m	1.4m
6m	1.7m	2.1m
8m	2.3m	2.8m
10m	2.9m	3.5m
12m	3.5m	4.2m

Illuminance at a distance  
Center beam LUX  
Beam width  
V H  
2m 40.97 LUX 0.6m 0.7m  
4m 10.25 LUX 1.2m 1.4m  
6m 4.51 LUX 1.7m 2.1m  
8m 2.56 LUX 2.3m 2.8m  
10m 1.64 LUX 2.9m 3.5m  
12m 1.14 LUX 3.5m 4.2m  
Horz Spread:16.4  
Vert Spread:20.0