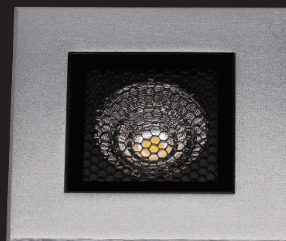
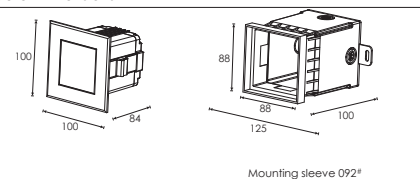


Recessed Inground Light

Stainless steel front cover with Matte Surface treatment



Outer Dimensions

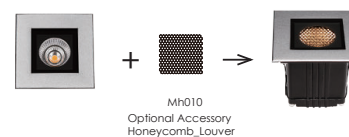


Material Specifications

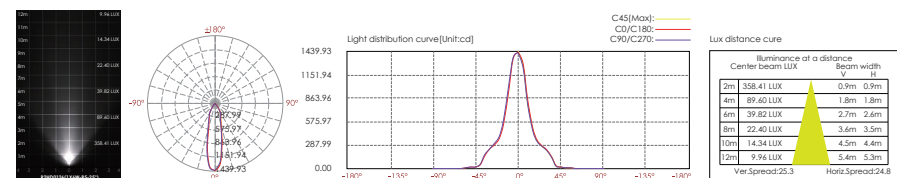
Housing	12" Die-casting grey powder coated aluminum, T=60-80um Adhesion of ISO class 1/ASTM class 4B
Front cover	Hard chromeplated stainless steel SUS 316"
Light Window	Tempered frosted step glass, T=8mm
LED	NICHIA COB LED
Cable gland	IP67 copper and nicked coated
Gasket	Molding shaped silicone seal
LED Driver	Constant Voltage Input, Constant Current Output
Operating temperature	-20°C~40°C
Power Cable	H05RN-F 2×1.0mm² L=0.5(low voltage) H05RN-F 3×1.0mm² L=0.5(high voltage)
Mounting sleeve	ABS Ø92"

Optional Honeycomb Louver

Product Overview



Item	Light source	Reflector	the manufacturer selected lens degree(°)Ø1/2	Input voltage[V]	Typical operating current(mA)	Typical consumption(W)	Typical luminance(lm)	IK rate
R2HD0126	1×6W	R5	25°	24V DC 120 / 240V	24V = 300 120V = 65 240V = 37	24V = 7.2 120V = 7.7 240V = 7.8	Cool white =648 Warm white =507	07



LED Colour Temperature

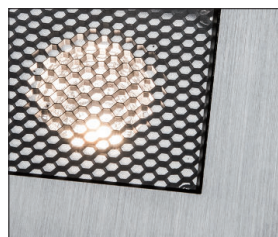
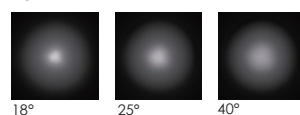
3000K
6000K

Optics

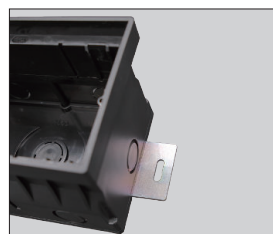


R5
R0118C035XL 18°
R0125C044XL 25°
R0140C044XL 40°

R5



Honeycomb for anti-glare



There are two metals support plate on the bottom of the sleeve. It is used for fixing and preventing the mounting sleeve shifting while filling the concrete. These will simply installer and electrician while they are recessing the sleeves.