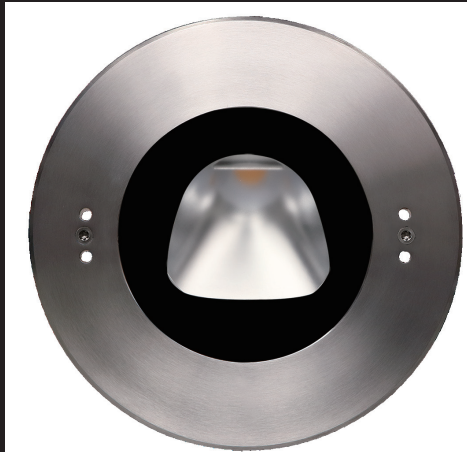


Asymmetrical  
Wall Recessed LED Pool Light  
Housing and accessories are made of Stainless Steel SUS 316L#



LED Colour Temperature  
3000K  
6000K

Optics

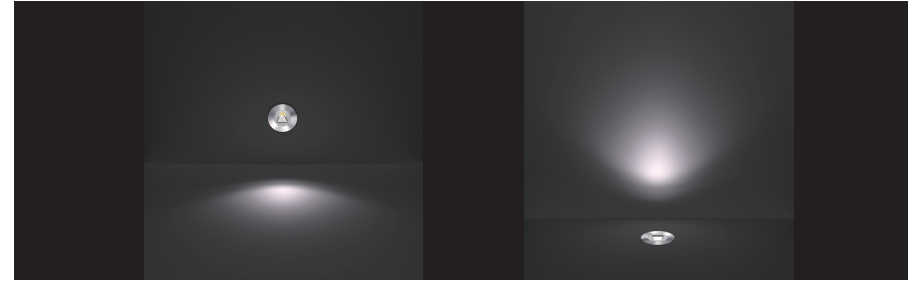


R22  
R01 C11LD

R22

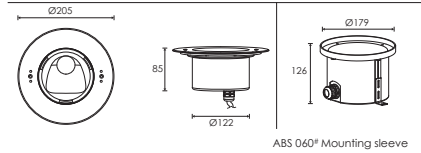


49°  
46°



Above diagram effect shows a real simulation based on IES result and optical testing basis

Outer Dimensions

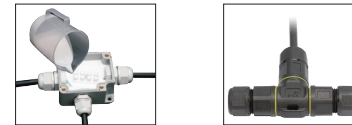


ABS 060° Mounting sleeve

Material Specifications

Front cover & Housing	Hard chrome plated molding shaped stainless steel SUS 316L
Light Window	Step tempered glass, T=10mm
Gasket	Silicone gasket
Reflector	Optical Reflector efficiency ≥ 90%
LED	COB LED
LED Driver	Constant Voltage Input Constant Current Output
Power Cable	H07RN-F 2X1.0mm² L=3.0m [for single color]
Application environment	Temperature of water between -20°C~40°C less than 1 meter depth.
Cable gland	PG-11 copper with nickel-coated
Mounting sleeve	ABS 060°

IP68 Water Proof Connector Box



Item	Light source	Lens	The manufacturer selected lens degree(°)B1/2	Input voltage(V)	Typical operating current(mA)	Typical consumption(W)	Typical Luminance(lm)	IK rate
R4ZH0129	1x12W	R22	49° 46°	24V DC	520	12.5	1194	08

