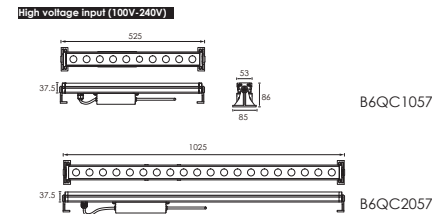
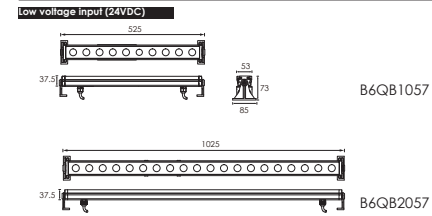


High Power LED Linear Wall Washer



Outer Dimensions

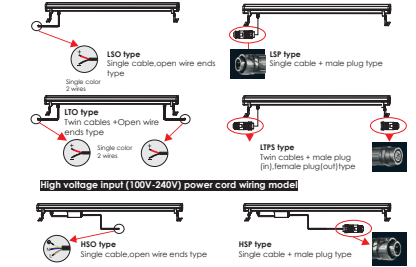
Unit:mm



Material Specifications

Housing	Extruded aluminum, powder coated
Lens	Optical lens, efficiency>85%
Light Window	Tempered glass, T=3mm
Cable gland	IP68 PG-11 PA66
Seale	Glass and housing are silicone sealed
LED	OSRAM SMD 3535
Operating temperature	-20°C~40°C
Bracket	12" Die-casting powder coated aluminum
Power Cable	H05RN-F 2X1.5mm ² L=0.25m (low voltage) H05RN-F 3X1.0mm ² L=0.5m (high voltage)
Dimmable support	Triac PWM 1-10V Dali (B6QB1057/B6QB2057)

Low voltage input (24VDC) power cord model



LED Colour Temperature

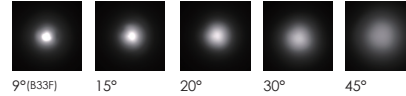
Optics

2000K
3000K
6000K



B33(B33D/B33F)
L0109F023YH 9°
L0115D023YH 15°
L0120D023YH 20°
L0130D023YH 30°
L0145D023YH 45°

B33(B33D/B33F)



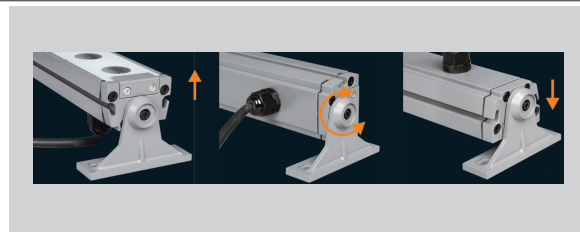
Optional Honeycomb Louver



Air Valve



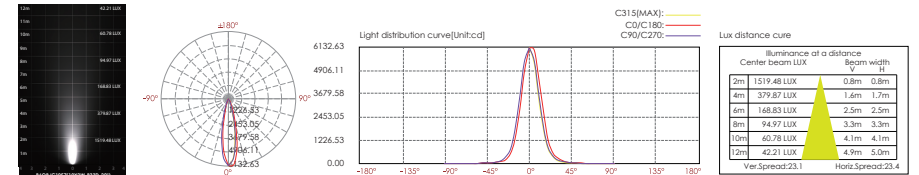
Cap-Optional Accessory



Adjustable beam direction

Item	Light source	Lens	The manufacturer selected lens degree(°)β1/2	Length L:(mm)	Input voltage(V)	Typical operating current(mA)	Typical consumption(W)	Typical luminance(lm)	IK rate
B6QB1057	10x2W Single color	B33D	20°	525	24V DC	1041	25.0	Cool white =1476 Warm white =1174	05
B6QB2057	20x2W Single color	B33D	20°	1025	24V DC	2056	50.0	Cool white =2890 Warm white =2308	05
B6QC1057	10x2W Single color	B33D	20°	525	120/240	120V = 174 240V = 92	120V = 20.8 240V = 20.8	Cool white =1476 Warm white =1338	05
B6QC2057	20x2W Single color	B33D	20°	1025	120/240	120V = 374 240V = 202	120V = 41.0 240V = 42.2	Cool white =2890 Warm white =2518	05

B6QB1057 B6QC1057



B6QB2057 B6QC2057

