

Adjustable Beam Direction LED Inground Light

LED Colour Temperature

2000K
3000K
6000K

Optics

	B27
	L0113D021YT 13°
	L0125D021YT 25°
	L0130D021YT 30°
	B26
	L0108C021YT 8°

B26



8°

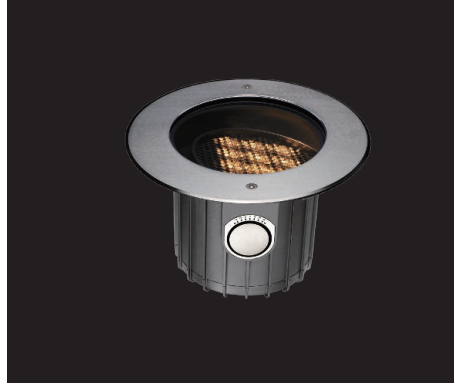
B27



13°

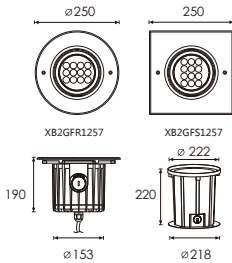
25°

30°



Outer Dimensions

Unit:mm



Material Specifications

Housing	12# die-casting grey powder coated aluminum . T=60-80µm, Adhesion of ISO class I/ASTM class 4B
Front cover	Hard chromeplated stainless steel SUS 316L#
Glass	Step tempered white coating glass.T=10 mm
Glass pressure capacity	Full Area=5513kgs
Cable gland	IP68 PA66 PG-13.5
Gasket	Molding shaped seal
LED Driver	Constant Voltage Input,Constant Current Output
Operating temperature	-20°C~40°C
Power cable	H05RN-F 2X1.0mm ² L=0.5m (low voltage) H05RN-F 3X1.0mm ² L=0.5m (high voltage)
Mounting sleeve	ABS Housing with iron base
Dimmable Support	TriaC PWM 1-10V Dali

Optional Honeycomb Louver

Product Overview



Optional Accessory Honeycomb_Louver

Item	Light source	Reflector	The manufacturer selected lens degree(°)θ1/2	Input voltage(V)	Typical operating current(mA)	Typical consumption(W)	Typical luminance(lm)	IK
<input type="radio"/> XB2GFR1257	12x1.5W	B27	13°	24V DC	24V = 1020	24V = 24.5	Cool white =1885 Warm white =1389	10
<input type="checkbox"/> XB2GFS1257				120/240	120V = 151 240V = 82	120V = 18.2 240V = 18.2		

