



Adjustable Beam Direction LED Inground Light

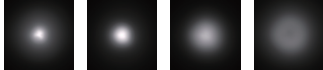
LED Colour Temperature

2000K
3000K
6000K

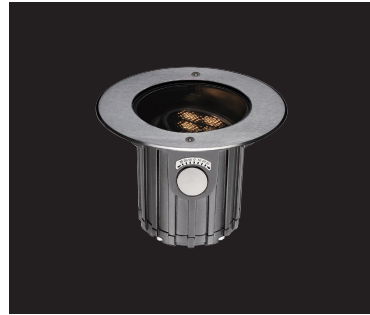
Optics

B17
L0115D017ME 15°
L0120D017ME 20°
L0130D017ME 30°
L0150D017ME 50°

B17

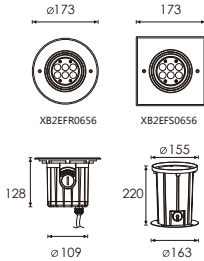


15° 20° 30° 50°



Outer Dimensions

Unit:mm



Material Specifications

Housing	12# die-casting grey powder coated aluminum . T=60-80µm. Adhesion of ISO class 1/ASTM class 4B
Front cover	Hard chromeplated stainless steel SUS 316L#
Glass	Step tempered white coating glass.T=8mmFull
Glass pressure capacity	Area=2621kgs
Cable gland	IP68 PG-11 PA66
Gasket	Molding shaped seal
LED Driver	Constant Voltage Input,Constant Current Output
Operating temperature	-20°C~40°C
Power cable	H07RN-F 2X1.0mm² L=0.5m (low voltage) H07RN-F 3X1.0mm² L=0.5m (high voltage)
Mounting sleeve	ABS Housing with iron base
Dimmable Support	Triac PWM 1-10V Dali

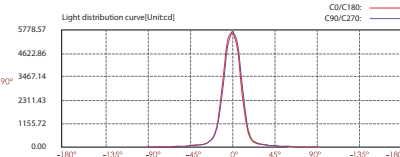
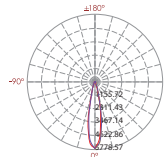
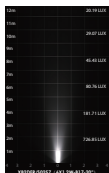
Optional Honeycomb Louver

Product Overview



Mh002
Optional Accessory
Honeycomb_Louver

Item	Light source	Reflector	The manufacturer selected lens degree(°)θ1/2	Input voltage[V]	Typical operating current[mA]	Typical consumption[W]	Typical luminance[lm]	IK
○ XB2EFR0656	6×1.2W	B17	20°	24V DC	24V = 325	24V = 7.8	Cool white =700 Warm white =570	10
□ XB2EFS0656				120V/240	120V = 70 240V = 46	120V = 9.2 240V = 9.2		



Center beam LUX	Beam width Y	X
2m	1428.35 LUX	0.7m 0.7m
4m	357.09 LUX	1.5m 1.5m
6m	158.71 LUX	2.2m 2.2m
8m	89.27 LUX	3.0m 2.9m
10m	57.13 LUX	3.7m 3.7m
12m	39.68 LUX	4.5m 4.4m

Ver.Spread:21.1 Horiz.Spread:20.8