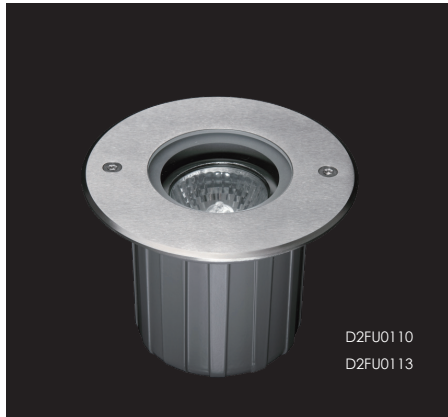


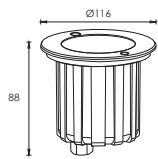
GX5.3 & GU10 Socket Available Inground Luminaire



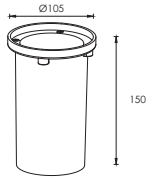
D2FU0110
D2FU0113

Outer Dimensions

Unit:mm



D2FU0110 D2FU0113



Mounting sleeve 073*

Material Specifications

Housing	12" Die-casting grey powder coated aluminum. T=60-80µm Adhesion of ISO class 1/ASTM class 4B
Front ring	Hard chromeplated stainless steel SUS 316L*
Light Window	Tempered frosted step glass.T=6mm
Gasket	Molding shaped silicone seal
Glass pressure capacity	Full area=1920kgs
Cable gland	IP68 PG-9 PA66
Power Cable	H05RN-F 3X1.0mm ² L=0.5m[for single color]]
Mounting sleeve	ABS 073*

Lighting Sources Option



GU-10 Pin Halogen Lamp
50W maximum power limit

Input voltage is according to halogen lamp spec.



GU-10 Pin LED Lamp
Maximum power limit is according to GU10 pin spec.

Input voltage is according to GU10 pin spec.

Item	Lamp socket	Input voltage(v)	Typical operating current(mA)
D2FU0110	GU-10	_____	_____
D2FU0113	G-5.3	_____	_____

