

LATEST LEDLINE FLEX TOP

More Light Leds per meter, more connection methods and more longer length,
We are always on the way to make perfection more perfect.

Polyurethane coating

IP68 certificate

It is IP68 protection, UV resistant and saltwater resistant via opal polyurethane coating. 3- Step MacAdam bin and dot free will bring the most excellent performance for Indoor&outdoor applications.

Various Colors

— 2700K...6500K

— Tunable white

— RGB/RGBW

MAX.
CONNECTION
LENGTH
UP TO 48MTR

Homogeneous light



PU Cable

The perfect combination! The Ledline Flex Top all is PU. Even the cable, we also use PU material for better combination and PU is more suitable for outdoor installation.

— IP68 Connectors

A smooth light line

Bottom Cable Entry

The cable are perfectly hidden to achieve seamless light connection. It can make several reels look like a whole long length. 5w/m, 10w/m, 15w/m optional, the connection length can up to 48Mtr. Can you image the smooth light linear 48Mtr just look like in 1 reel?

Ends design



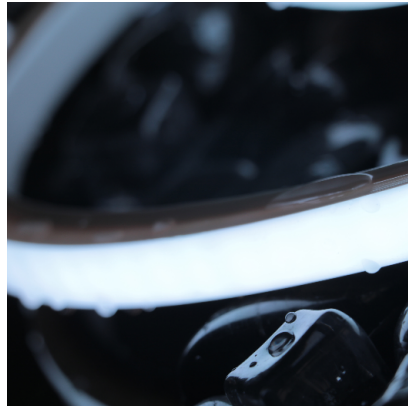
Front Cable Entry

Most flexible ends design, you can freely bend the cable in all directions to fit your installation. What is amazing point? The whole linear light in a same size from one end to another end, we can easily install it in profile, even the ends can be installed in profile.

Side Cable Entry

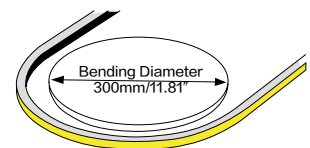
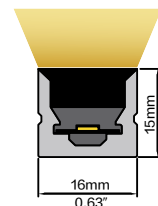
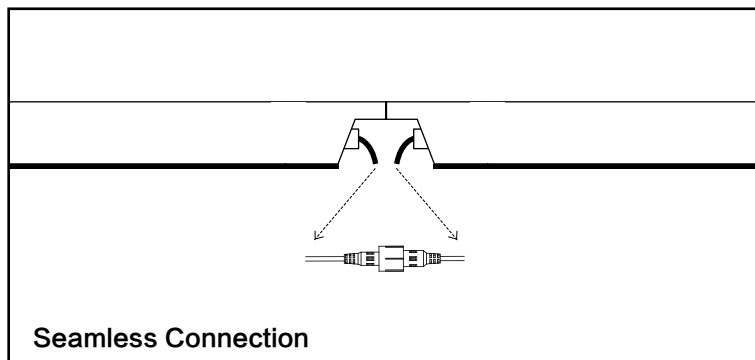
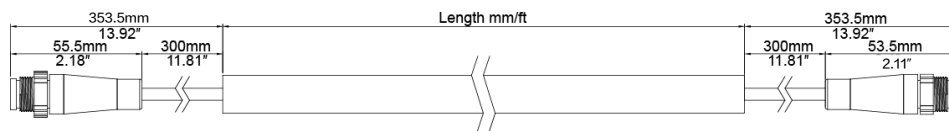
The cable are perfectly hidden to achieve seamless light connection. Various connections to fit your different installation environment. A seeing is much better than thousands of words. Please visit our booth level 3, 3B-801/03 at Hongkong Lighting fair or visit our factory if you see the value of our products.

LEDLINE FLEX TOP



Ledline Flex Top, DC24V, has bending direction vertically with radius of 150mm(5.9") and a cross section size: 16mm*15mm/0.63"x0.59"(W*H). It is IP68 protection, UV resistant and saltwater resistant via opal polyurethane coating. 3-Step MacAdam bin and dot free will bring the most excellent performance for indoor&outdoor applications.

DIMENSION

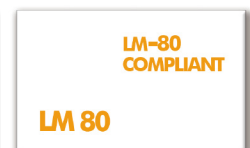


Electrical data

Voltage	DC24V (23.5Vmin, 24.5Vmax)		
LED PIN Temperature	Max. 65°C /149°F		
Storage Temperature	-25°C /-13°F _{min} , 60°C /140°F _{max}		
Ambient Temperature	Ta _{min} = -25°C /-13°F, Ta _{max} (Table below)		
CRI	Ra80/ Ra90 optional		

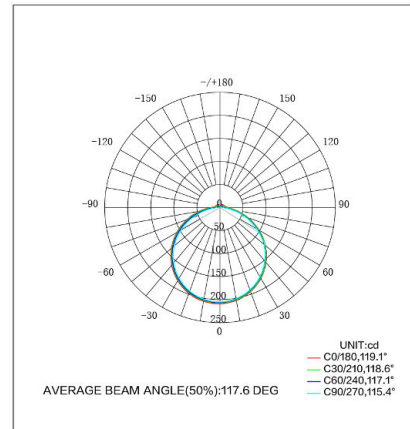
Ledline Flex Top	Low output	Mid output	High output
Power(W/m W/ft)	5/1.5	10/3.1	15/4.6
Efficacy(lm/W) @4000K	112	90	82.5
Max. Ambient temp.(Ta _{max})	50°C /122°F	45°C /113°F	35°C /95°F

1. It is available in PRO/ADV version.
2. IP68= Full coating. TUV IP68 certification could be provided.
3. Due to the tolerances of the production and electrical components, output values and electrical power can vary up to 10%.



ONE BIN ONLY
Color consistency
Today and tomorrow

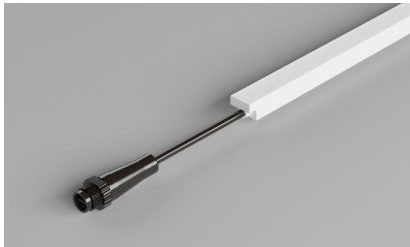
		5W (low output)		10W (mid output)		15W (high output)		
	CCT	Lm/m	Max. run length	Lm/m	Max. run length	Lm/m	Max. run length	Unit cut
	2700K	498	24M	776	15M	1030	11M	41.666
	3000K	516	24M	785	15M	1146	11M	41.666
	3200K	496	24M	851	15M	1120	11M	41.666
	3700K	540	24M	889	15M	1188	11M	41.666
	4000K	564	24M	898	15M	1236	11M	41.666
	5000K	537	24M	887	15M	1204	11M	41.666
	6500K	513	24M	870	15M	1139	11M	41.666
	T.W	544	22M	850	15M	1136	11M	50
	W W	276	22M	432	15M	583	11M	50
	C W	278	22M	435	15M	588	11M	50
	Red	159	24M	253	15M	340	11M	41.666
	Green	382	24M	507	15M	615	11M	41.666
	Blue	94	24M	133	15M	152	11M	41.666
	Amber	163	24M	239	15M	355	11M	41.666
	Pink	263	24M	412	15M	557	11M	41.666
	RGB	262	8M	411	5M	555	3M	71.429
	RGBW	436	8M	673	5M	860	3M	71.429
	W832	245	8M	407	5M	548	3M	71.429
	W840	258	8M	432	5M	582	3M	71.429
	W865	258	8M	432	5M	582	3M	71.429



3000K IES File

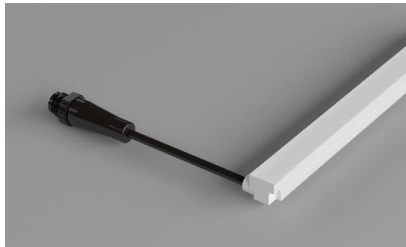
1. T.W= Tunable White, W832= RGB+W3200K, Ra80.
2. Max. run length refers to single side feed in serial connection.
3. The given color temperature is the strip (after coating) color temperature.
4. The given data are typical values due to the tolerances of the production process and the electrical components, values for light output and electrical power can vary up to 10%.
5. It is no IK-Rated, please don't walk on it without protection.

VARIOUS CONNECTIONS



Front Cable Entry

The cable could be hidden in all directions by the flexible design.



Side Cable Entry

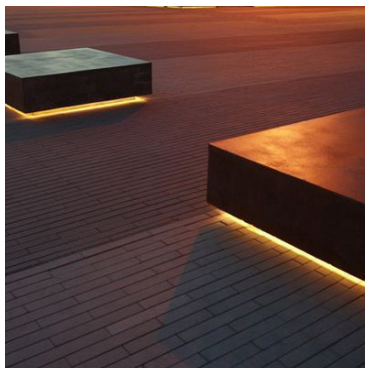
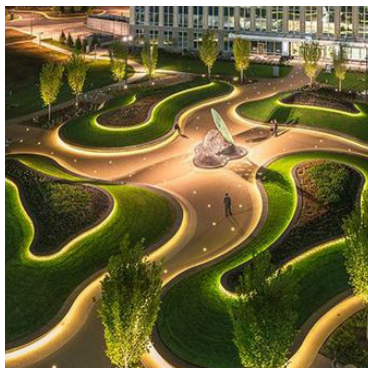
The cable could be perfectly hidden to achieve seamless light connection.



Bottom Cable Entry

The cable could be perfectly hidden to achieve seamless light connection.

APPLICATIONS



The Ledline Flex Top can be both shaped and straight illumination. You could achieve shape decoration with clips, while the straight one with profile. There are different lengths available, you could cut it by yourselves or customize length in our factory.

High quality IP68 connectors for various applications, but if you'd like to install under water, please make sure the connector or cable connection is out of water.

The homogeneous light is getting more and more popular due to its appealing linear LED light design.

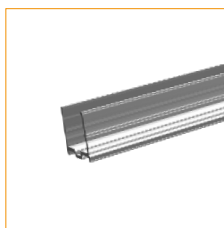
ACCESSORIES



Aluminium Profile
Article No. AC011-AP
Dimension: 1000x19.2x17.8mm/39.37" x0.76" x0.7" (L x W x H)
Material: aluminium
Color: silver



IP67 Connector 4Pin
Article No. AD001-4
Wire gauge: 0.519mm²/20AWG
Protection: IP67(Mated)
Mechanical operation: > 500 mating cycles



PC Profile
Article No. AC011-PC
Dimension: 1000x19.5x19.8mm/39.37" x0.77" x0.78" (L x W x H)
Material: plastic
Color: transparent



IP68 Connector 5Pin
Article No. AD001-5
Wire gauge: 1.0mm²/18AWG
Protection: IP68(Mated)
Mechanical operation: > 500 mating cycles
Contact: Brass, Gold plating
Material of housing: PA



Mounting Clips
Article No. AC008-SET
Dimension: 15x18.2x10.1mm/0.59" x0.72" x0.4" (L x W x H)
Material: stainless steel
Color: silver
Each meter of LED strip needs 3 clips + 3 screws + 2 end caps



IP68 2Pin 2Ways
Article No. AD004-2
Wire gauge: 1.0mm²/18AWG
Protection: IP68(Mated)
Mechanical operation: > 500 mating cycles
Contact: Brass, Gold plating
Material of housing: PA



Holding Clips
Article No. AC008-HC
Dimension: 34.6x10x16.5mm/1.36" x0.39" x0.65" (L x W x H)
Material: silicone
Color: opal
Each meter of LED strip needs 3 clips + 6 screws



IP68 2Pin 3Ways
Article No. AD004-3
Wire gauge: 1.0mm²/18AWG
Protection: IP68(Mated)
Mechanical operation: > 500 mating cycles
Contact: Brass, Gold plating
Material of housing: PA



IP68 Connector 2Pin
Article No. AD001-2
Wire gauge: 1.0mm²/18AWG
Protection: IP68(Mated)
Mechanical operation: > 500 mating cycles
Contact: Brass, Gold plating
Material of housing: PA



IP68 2Pin 4Ways
Article No. AD004-4
Wire gauge: 1.0mm²/18AWG
Protection: IP68(Mated)
Mechanical operation: > 500 mating cycles
Contact: Brass, Gold plating
Material of housing: PA



IP68 Connector 3Pin
Article No. AD001-3
Wire gauge: 1.0mm²/18AWG
Protection: IP68(Mated)
Mechanical operation: > 500 mating cycles
Contact: Brass, Gold plating
Material of housing: PA



IP68 2Pin 5Ways
Article No. AD004-5
Wire gauge: 1.0mm²/18AWG
Protection: IP68(Mated)
Mechanical operation: > 500 mating cycles
Contact: Brass, Gold plating
Material of housing: PA

