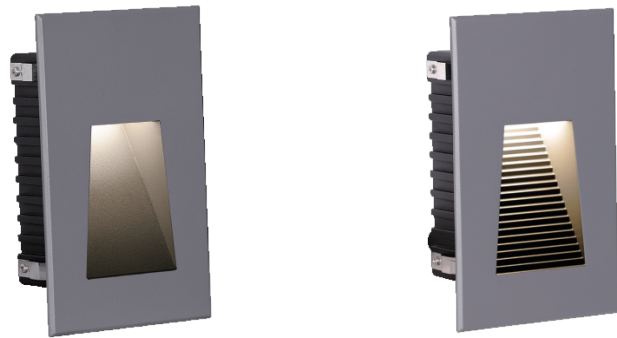


## Recessed LED Stair Light and Wall Light



### LED Colour Temperature

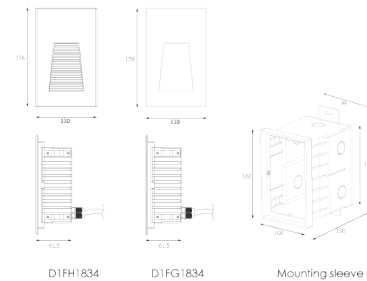
- 2000K
- 3000K
- 6000K

### Optics

- N/A

### Outer Dimensions

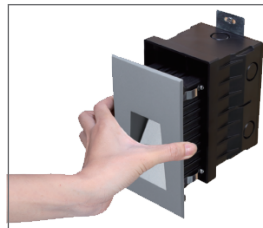
Unit:mm



### Material specifications

Housing	12# Die-casting grey powder coated aluminum. T=60-80um Adhesion of ISO class 1/ASTM class 4B
Front cover	12# Die-casting aluminum <b>RAL7037</b> powder coated T=20-30um Adhesion of ISO class 1/ASTM class 4B
LED	<b>SMD3030</b> type LED
Cable gland	IP67 copper and nicked coated
Gasket	Molding shaped silicone seal
LED Driver	Constant Voltage Input, Constant Current Output
Operating temperature	-20°C-40°C
Power Cable	H05RN-F 2X1.0mm <sup>2</sup> L=0.5m (low voltage) H05RN-F 3X1.0mm <sup>2</sup> L=0.5m (high voltage)
Mounting sleeve	ABS 091#
Dimmable Support	<b>Triac PWM 1-10V Dali</b>

Front Cover Color Option		
- Basic	- Secondary	
Sanded Dark Grey KAP 7037	Silver Grey KAP 9022	Sanded Black RAL9005



The clips have been specially modified and upgraded to have a stronger structure in order to make up the absence of the screw fixing.



There are two metal support plates on the bottom of the sleeve. It is used for fixing and preventing the mounting sleeve shifting while filling the concrete. These will simply installer and electrician while they are recessing the sleeves.

Item	Light source	Input voltage(V)	Typical operating current(mA)	Typical consumption(W)	Typical luminance(lm)	IK rate
<b>D1FG1834</b>	18*0.2W	24V DC	24V = 240	24V = 5.5	Cool white =56.0 Warm white =45.6	10
		120V/240	120V = 103	120V = 7.0		
		240V = 57	240V = 7.0			
<b>D1FH1834</b>	18*0.2W	24V DC	24V = 230	24V = 5.5	Cool white =54.8 Warm white =43	10
		120V/240	120V = 103	120V = 7.0		
		240V = 57	240V = 7.0			

