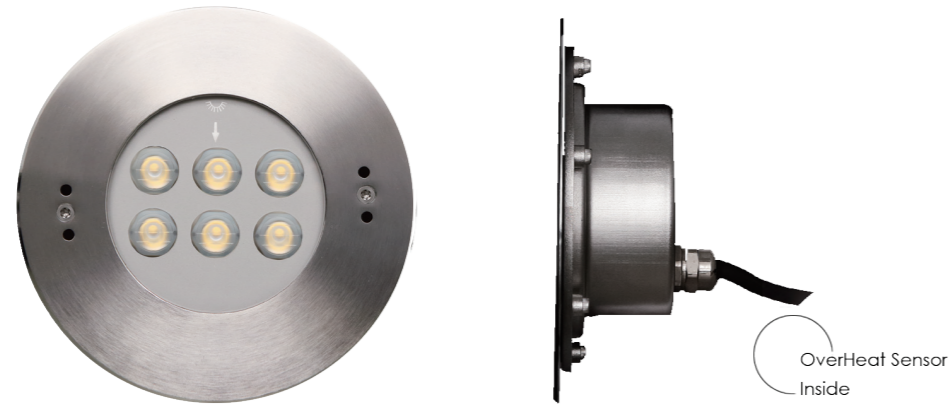


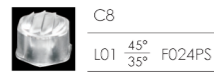
Asymmetrical  
Wall Recessed LED Pool Light  
Completely Hard chromeplated Stainless Steel SUS 316L# Housing and Accessories



LED Colour Temperature

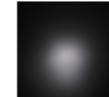
- 2000K
- 3000K
- 6000K

Optics

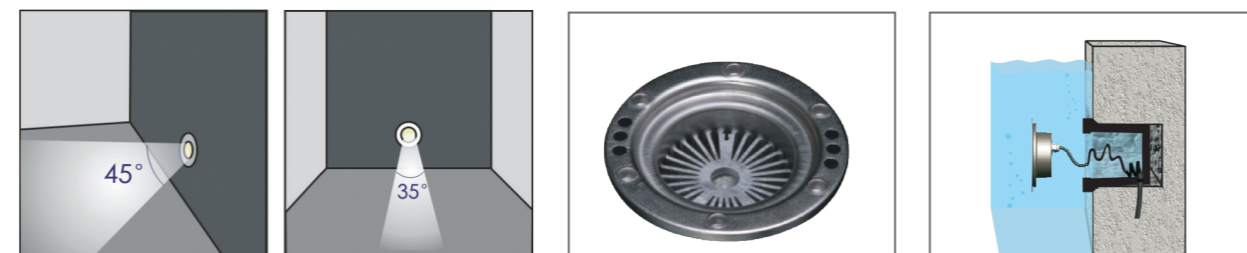


C8  
L01 45°/35° F024PS

C8



45°  
35°

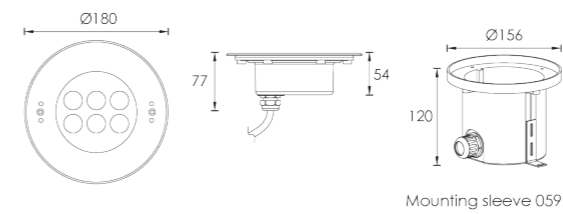


Built-in Radiator

Water must be allowed to go inside and outside sleeve freely without leaking to the other side.  
**Warning:**  
Must be installed under the water to prevent the light from being burnt off because of over-heating.

Outer Dimensions

Unit:mm



Material specifications

Front cover & Housing	Molding shaped hard chromeplated stainless steel SUS 316L#
Light Window	Step tempered glass.T=8mm
Gasket	Silicone gasket
PCB	Excellent heat conductivity aluminum.coefficient of heatConductivity≥2.0w/mk
Cable gland	IP68 PG-11 copper with nickel-coated
LED Driver	Constant Voltage Input,Constant Current Output
Power Cable	H07RN-F 2X1.0mm² L=3.0m
Application environment	Temperature of water between -20°C~40°C less than 1 meter depth.
Built-in Overheat Sensor System	Automatic Shutdown at 75°C
Mounting sleeve	059# ABS
Dimmable Support	Triac PWM 1-10V DalI

Item	Light source	Lens	The manufacturer selected lens degree(°)@1/2	Input voltage(V)	Typical operating current(mA)	Typical consumption(w)	Typical luminance(lm)	IK rate
<b>C4YB0657</b>	6×2W	C8	45°/35°	24V DC	700	16.8	Cool white=853 Warm white =682	08

