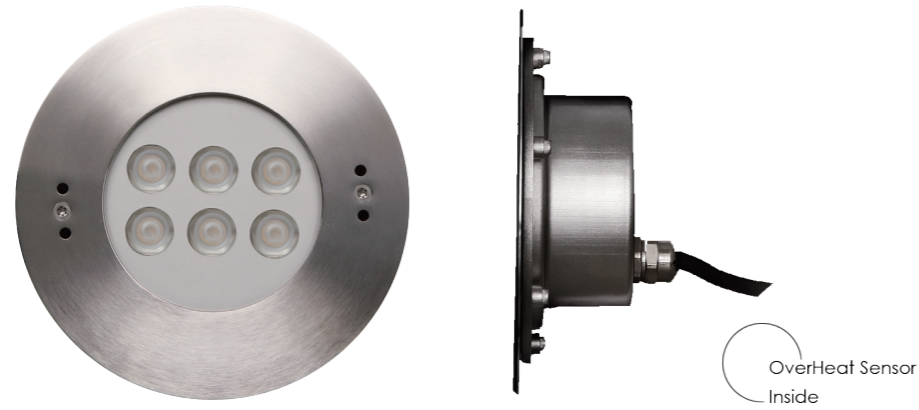


Wall Recessed LED Pool Light
Completely Stainless Steel SUS 316# Housing and Accessories



LED Colour Temperature

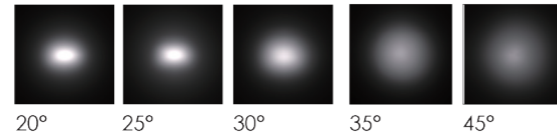
- 2000K
- 3000K
- 6000K

Optics

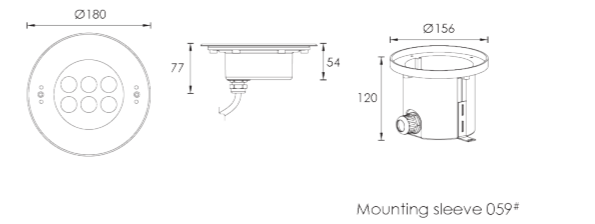


B32
L0120F024PS 20°
L0125F024PS 25°
L0130F024PS 30°
L0135F024PS 35°
L0145F024PS 45°

B32



Outer Dimensions

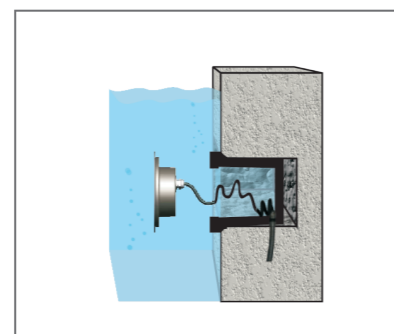


Material specifications

Front cover & Housing	Molding shaped hard chrome plated stainless steel SUS 316L#
Light Window	Step tempered glass.T=8mm
Gasket	Silicone gasket
PCB	Excellent heat conductivity aluminum.coefficient of heatConductivity≥2.0w/mk
Cable gland	IP68 PG-11 copper with nickel-coated
LED Driver	Constant Voltage Input,Constant Current Output
Power Cable	H07RN-F 2X1.0mm² L=3.0m
Application environment	Temperature of water between -20°C~40°C less than 1 meter depth.
Built-in Overheat Sensor System	Automatic Shutdown at 75°C
Mounting sleeve	059# ABS
Dimmable Support	Triac PWM 1-10V Dali



Built-in Radiator



Water must be allowed to go inside and outside sleeve freely without leaking to the other side.

Warning:
Must be installed under the water to prevent the light from being burnt off because of over-heating.

Item	Light source	Lens	The manufacturer selected lens degree(°)θ1/2	Input voltage(V)	Typical operating current(mA)	Typical consumption(w)	Typical luminance(lm)	IK rate
B4YB0657	6x2W	B32	30°	24V DC	700	16.8	Cool white =754 Warm white =656	08

